



BLUE SPRINGS OFFICE SPACE

1209 NW North Ridge Drive, Blue Springs, MO



CONTACT AGENT FOR PRICING | 1,200-1,650 SF AVAILABLE

DEMOGRAPHICS

	1 mile	3 miles	5 miles
Estimated Population	9,400	52,363	93,808
Avg. Household Income	\$115,275	\$114,045	\$116,271

- Renovated office building for lease
- Perfect for health services, legal services, insurance, etc
- Wheel chair accessible entrance
- Easy access to I-70 and 7 Hwy
- Secured entry/exit with vestibule
- The space features three private offices, a large conference room, and a reception area
- Motivated landlord
- [Click Here to View Virtual Tour](#)



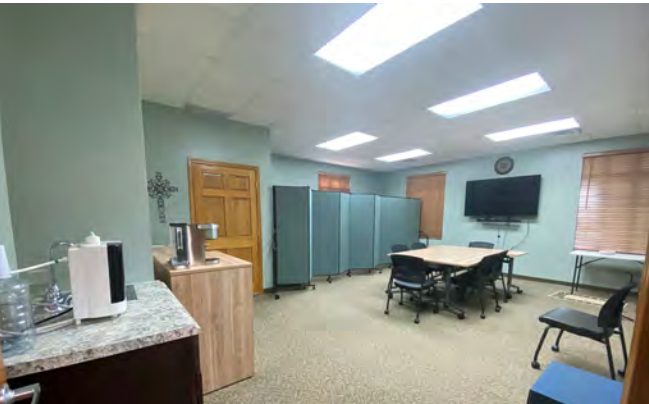
CLICK HERE TO VIEW MORE
LISTING INFORMATION

For More Information Contact:

GRANT SUMMERS | 816.412.7307 | gsummers@blockandco.com

Exclusive Agent

PHOTOS





BLUE SPRINGS OFFICE SPACE

1209 NW North Ridge Drive, Blue Springs, MO

AERIAL PHOTO





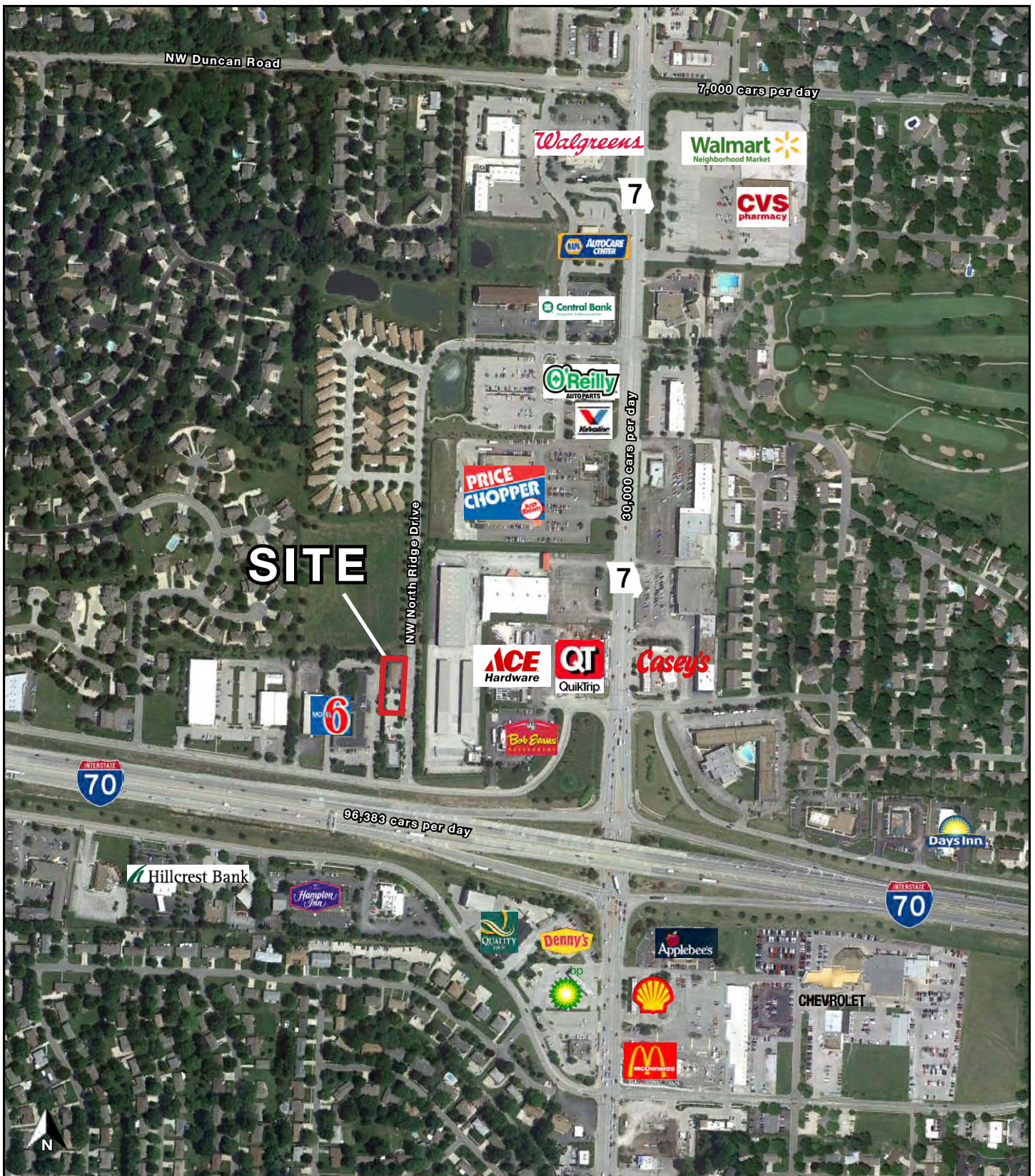
BLUE SPRINGS OFFICE SPACE

1209 NW North Ridge Drive, Blue Springs, MO

DRONE PHOTO



AERIAL

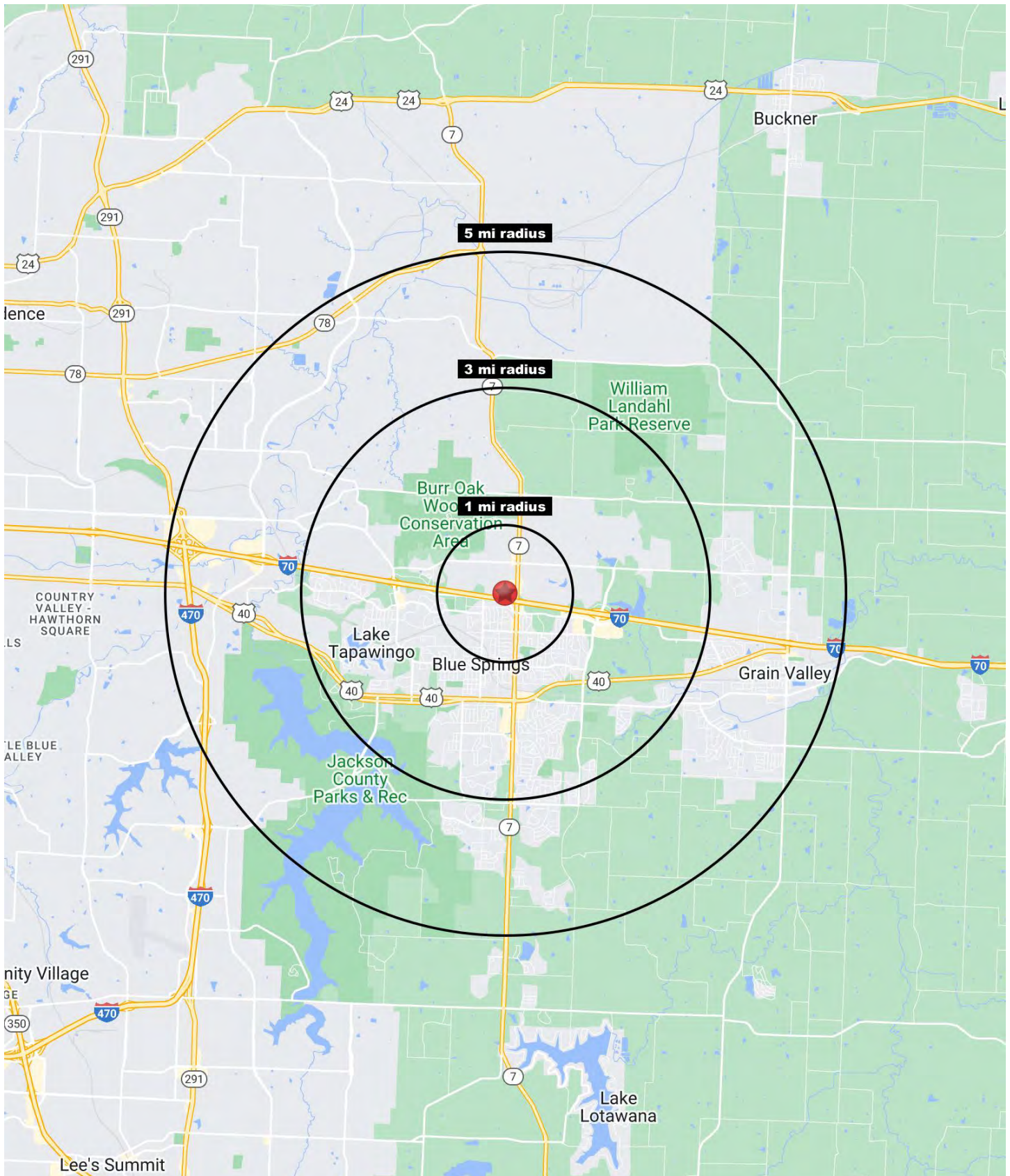




All information furnished regarding property for sale or lease is from sources deemed reliable, but no warranty or representation is made as to the accuracy thereof and the same is subject to errors, omissions, changes of prices, rental or other conditions, prior sale or lease or withdrawal without notice.

BLUE SPRINGS OFFICE SPACE

1209 NW North Ridge Drive, Blue Springs, MO





BLUE SPRINGS OFFICE SPACE

1209 NW North Ridge Drive, Blue Springs, MO

1209 NW North Ridge Dr Blue Springs, MO 64015	1 mi radius	3 mi radius	5 mi radius
Population			
2025 Estimated Population	9,400	52,363	93,808
2030 Projected Population	9,477	52,977	96,991
2020 Census Population	9,024	53,610	93,827
2010 Census Population	8,878	49,555	82,476
Projected Annual Growth 2025 to 2030	0.2%	0.2%	0.7%
Historical Annual Growth 2010 to 2025	0.4%	0.4%	0.9%
2025 Median Age	39.5	37.6	37.9
Households			
2025 Estimated Households	3,793	20,065	35,907
2030 Projected Households	3,866	20,505	37,367
2020 Census Households	3,646	19,955	35,130
2010 Census Households	3,542	18,521	30,803
Projected Annual Growth 2025 to 2030	0.4%	0.4%	0.8%
Historical Annual Growth 2010 to 2025	0.5%	0.6%	1.1%
Race and Ethnicity			
2025 Estimated White	80.7%	80.3%	80.8%
2025 Estimated Black or African American	9.3%	9.4%	9.1%
2025 Estimated Asian or Pacific Islander	1.6%	1.6%	1.7%
2025 Estimated American Indian or Native Alaskan	0.3%	0.4%	0.3%
2025 Estimated Other Races	8.1%	8.3%	8.0%
2025 Estimated Hispanic	7.3%	7.5%	7.3%
Income			
2025 Estimated Average Household Income	\$115,275	\$114,045	\$116,271
2025 Estimated Median Household Income	\$78,485	\$85,479	\$89,834
2025 Estimated Per Capita Income	\$46,603	\$43,737	\$44,556
Education (Age 25+)			
2025 Estimated Elementary (Grade Level 0 to 8)	1.1%	1.0%	1.4%
2025 Estimated Some High School (Grade Level 9 to 11)	4.4%	3.4%	3.1%
2025 Estimated High School Graduate	27.3%	27.7%	28.5%
2025 Estimated Some College	24.7%	25.0%	23.3%
2025 Estimated Associates Degree Only	8.6%	8.1%	8.3%
2025 Estimated Bachelors Degree Only	21.8%	22.9%	23.0%
2025 Estimated Graduate Degree	12.1%	12.0%	12.4%
Business			
2025 Estimated Total Businesses	593	1,868	3,153
2025 Estimated Total Employees	3,928	14,083	29,630
2025 Estimated Employee Population per Business	6.6	7.5	9.4
2025 Estimated Residential Population per Business	15.8	28.0	29.8

©2025, Sites USA, Chandler, Arizona, 480-491-1112 Demographic Source: Applied Geographic Solutions 5/2025, TIGER Geography - RS1